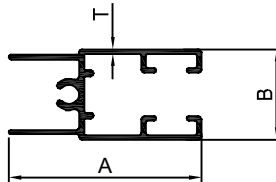
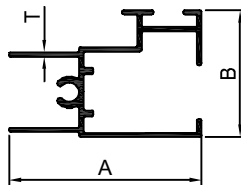


### 12MM SHUTTER



Section No.	A	B	T	Weight in Kg. / 12 ft.
3201	30.50	14.70	0.75	0.800-0.950
3202	30.50	14.70	0.90	0.950-1.100
3203	30.50	14.70	1.20	1.100-1.300

### 12mm INTER LOCK



Section No.	A	B	T	Weight in Kg. / 12 ft.
3206	30.50	20.70	0.70	0.800-0.950
3207	30.50	20.70	0.90	0.950-1.100
3208	30.50	20.70	1.20	1.100-1.300