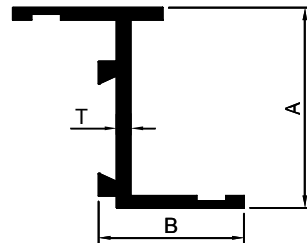
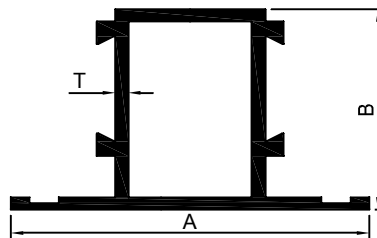


CASEMENT WINDOW "Z"



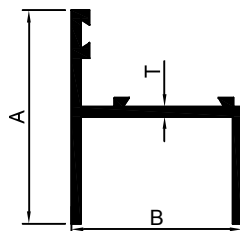
Section No.	A	B	T	Weight in Kg. / 12 ft.
3301	33.00	24.50	1.60	1.400-1.600
3302	33.00	24.50	2.10	1.600-2.000
3303	33.00	24.50	2.50	2.000-2.500
3304	33.00	24.50	3.00	2.500-3.000

CASEMENT WINDOW MULLION



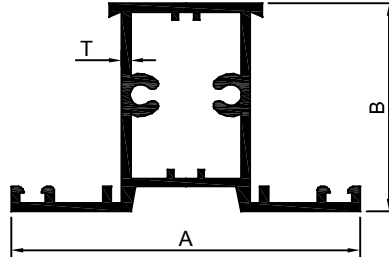
Section No.	A	B	T	Weight in Kg. / 12 ft.
3307	59.00	33.00	1.80	2.400-2.800
3308	59.00	33.00	2.00	2.800-3.200
3309	59.00	33.00	2.50	3.600-4.400

CASEMENT WINDOW "h"



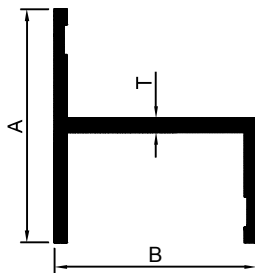
Section No.	A	B	T	Weight in Kg. / 12 ft.
3313	33.00	38.50	1.60	1.400-1.700
3314	33.00	38.50	1.80	1.700-2.100
3315	33.00	38.50	2.20	2.100-2.400
3316	33.00	38.50	2.50	2.400-2.800
3317	33.00	38.50	3.20	2.800-3.300

MULLION WITH SCREW BOX



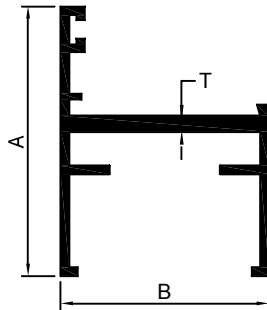
SectionNo.	A	B	T	Weight in Kg./12ft
3310	57.00	33.80	1.35	2.600-3.000
3311	57.00	33.80	1.65	3.000-3.500

PLAIN "h" SECTION



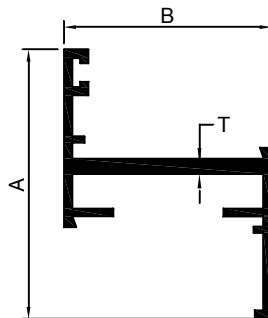
SectionNo.	A	B	T	Weight in Kg./12ft
3320	38.10	33.00	2.30	1.700 - 2.500

CASEMENT WINDOW "h" 34 MM



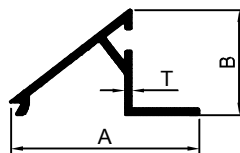
SectionNo.	A	B	T	Weight in Kg./12ft
5757	44.00	34.00	2.60	1.800 - 2.200

CASEMENT WINDOW "Z" 34 MM



SectionNo.	A	B	T	Weight in Kg./12ft
5758	44.00	34.00	2.60	1.750 - 2.200

CLIP 34 MM



SectionNo.	A	B	T	Weight in Kg./12ft
5907	31.00	17.20	1.10	0.550 - 0.900